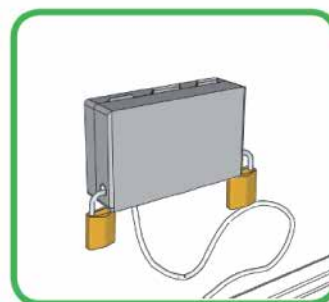
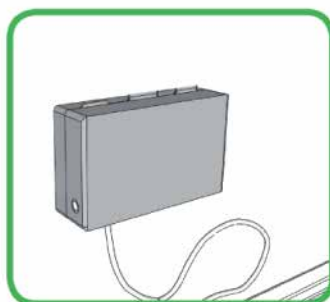
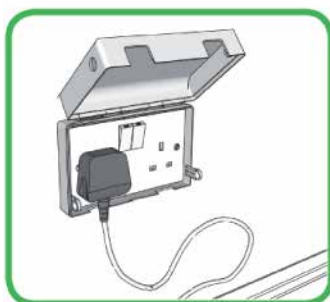
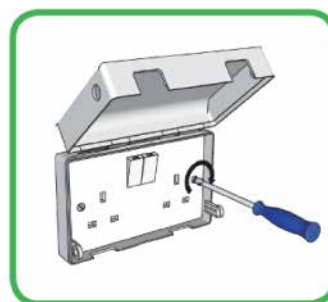
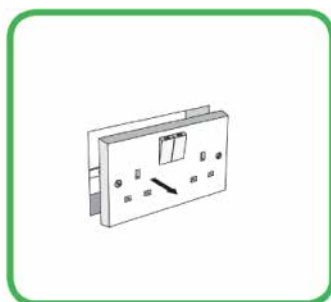
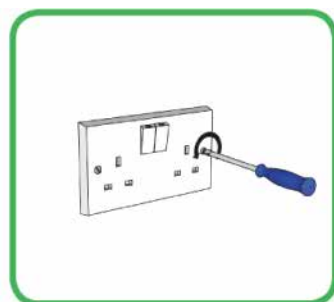


### Product Information and Assembly Instructions - Lockable Socket Covers SSC1 & DSC1

**WARNING:** Before commencing installation, switch off power at the mains.

**NOTE:** The SSC1 and DSC1 Lockable Socket Covers are suitable for use with flush fit or surface mount sockets or switch plates.

1. Loosen the screws on the face of the socket/switch (approximately 5mm - do not remove completely).
2. Ease the switch plate away from the wall or surface mount box.
3. Fit the SSC1 or DSC1 Lockable Socket Cover by locating the top and bottom retaining lugs behind the switch plate.
4. Re-tighten the switch plate retaining screws.
5. Close the cover, engaging the lugs in the holes.
6. Lock the cover with a padlock at each side, passing the shackle through the hole in the lug and out of the bottom of the cover.



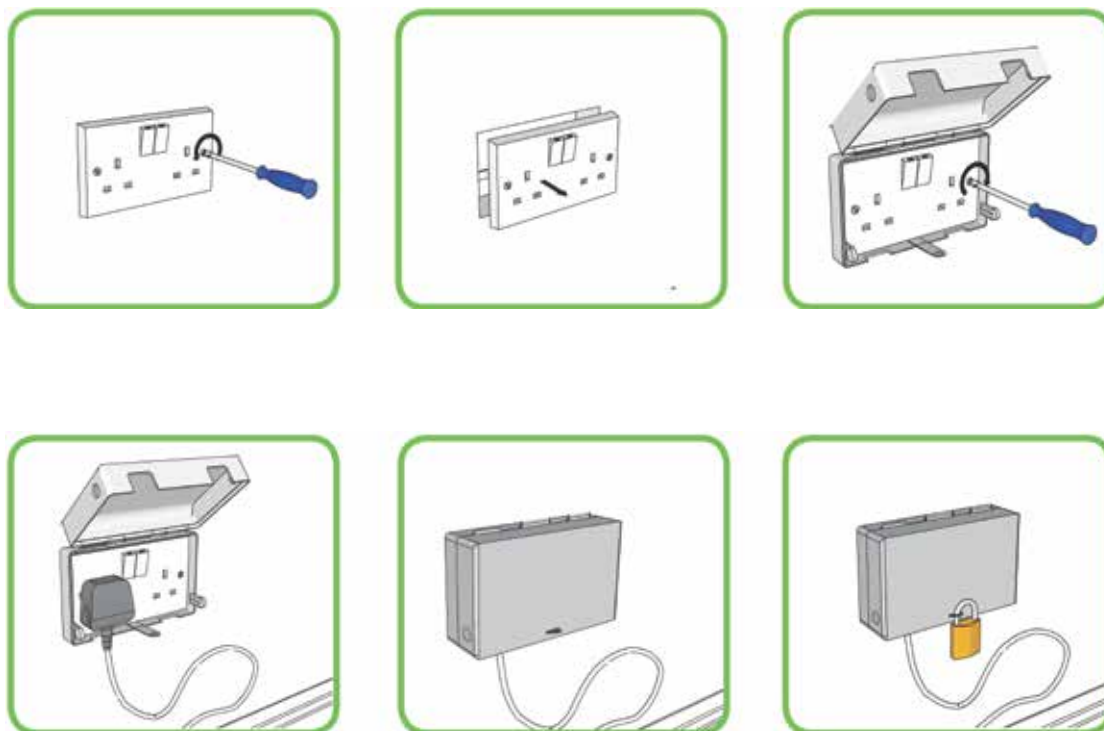
Disclaimer: Appropriate use of this product is the sole responsibility of the user in relation to health and safety regulations. Before using, user shall determine the suitability of the product for his intended use and user assumes all risk and liability whatsoever in connection therewith. Reece Safety Products Ltd is not responsible for any loss or damage arising from the use of this product, which is beyond Reece Safety Products Ltd control, and liability is restricted to the replacement of material proven faulty.

### Product Information and Assembly Instructions - Lockable Socket Cover DSC1

**WARNING:** Before commencing installation, switch off power at the mains.

**NOTE:** The SSC1 and DSC1 Lockable Socket Covers are suitable for use with flush fit or surface mount sockets or switch plates.

1. Loosen the screws on the face of the socket/switch (approximately 5mm - do not remove completely).
2. Ease the switch plate away from the wall or surface mount box.
3. Fit the SSC1 or DSC1 Lockable Socket Cover by locating the top and bottom retaining lugs behind the switch plate.
4. Re-tighten the switch plate retaining screws.
5. Close the cover, engaging the lugs in the holes.
6. Lock the cover with a padlock at each side, passing the shackle through the hole in the lug and out of the bottom of the cover.



Disclaimer: Appropriate use of this product is the sole responsibility of the user in relation to health and safety regulations. Before using, user shall determine the suitability of the product for his intended use and user assumes all risk and liability whatsoever in connection therewith. Reece Safety Products Ltd is not responsible for any loss or damage arising from the use of this product, which is beyond Reece Safety Products Ltd control, and liability is restricted to the replacement of material proven faulty.